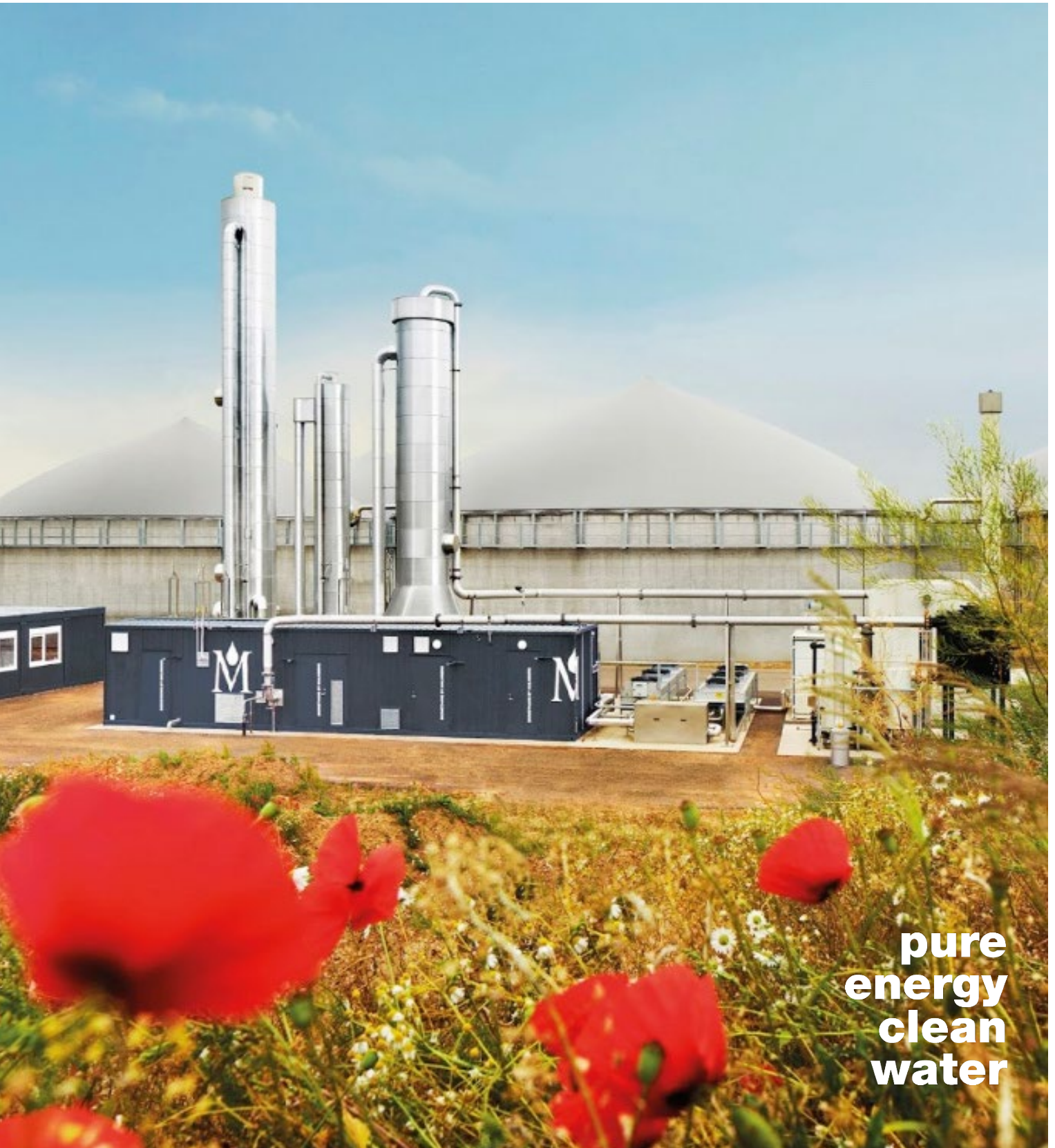




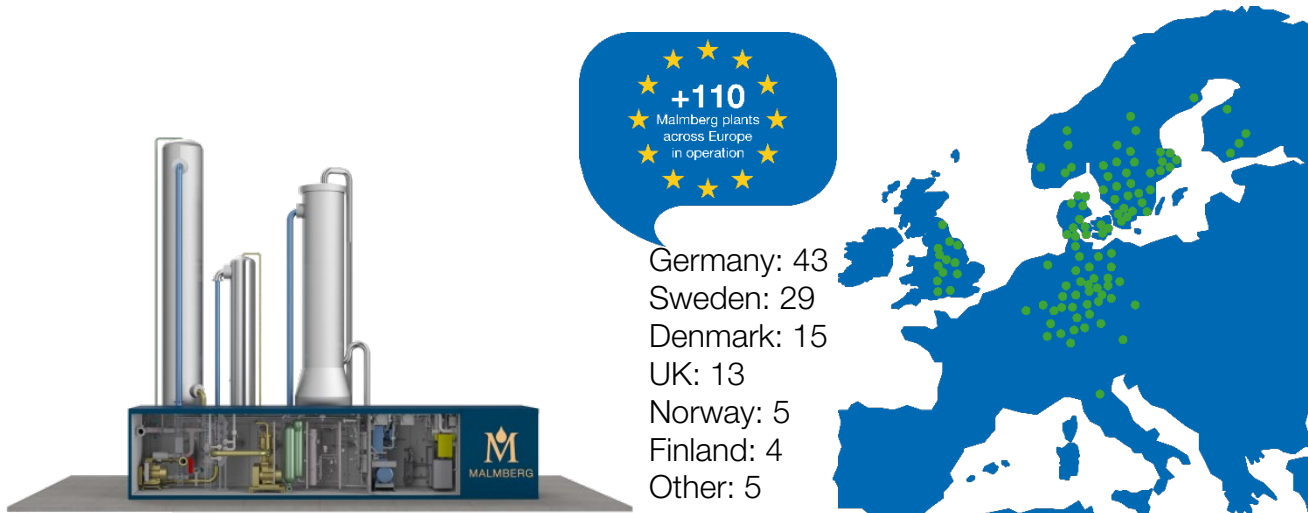
# Malmberg Biogas upgrading references 1998-2019



**pure  
energy  
clean  
water**

# Malmberg COMPACT™ - Swedish Cleantech

Malmberg COMPACT™ is a prefabricated, standardized biogas upgrading machine. We are among the pioneers in the field of biogas upgrading to biomethane with more than 110 upgrading units in Europe.



## Our range of Malmberg COMPACT™ - raw gas capacity

<b>GR BAS 1</b>	<b>GR BAS 2</b>	<b>GR BAS 3</b>
130-270 Nm <sup>3</sup> /h	180-360 Nm <sup>3</sup> /h	250-600 Nm <sup>3</sup> /h
<b>GR 6</b>	<b>GR 9</b>	<b>GR 14R</b>
350-700 Nm <sup>3</sup> /h	450-900 Nm <sup>3</sup> /h	500-1000 Nm <sup>3</sup> /h
<b>GR 14</b>	<b>GR 14XL</b>	<b>GR 20R</b>
700-1400 Nm <sup>3</sup> /h	750-1400 Nm <sup>3</sup> /h	900-1800 Nm <sup>3</sup> /h
<b>GR 20</b>	<b>GR 28</b>	<b>GR 50</b>
1200-2400 Nm <sup>3</sup> /h	1400-2800 Nm <sup>3</sup> /h	2500-5000 Nm <sup>3</sup> /h



GR BAS 1-3  
130-600 Nm<sup>3</sup>/h



GR 6-50  
350-5000 Nm<sup>3</sup>/h

<b>114.</b>	<p><b>Place</b> Solröd B, Denmark</p> <p><b>Customer</b> Bigadan</p> <p><b>Type of biogas</b> Seaweed/agricultural</p>	<p><b>Use of the biomethane</b> Grid injection</p> <p><b>Capacity (Nm<sup>3</sup>/h)</b> 1400</p> <p><b>Year</b> <i>In production</i></p>
<b>113.</b>	<p><b>Place</b> Solröd A, Denmark</p> <p><b>Customer</b> Bigadan</p> <p><b>Type of biogas</b> Seaweed/agricultural</p>	<p><b>Use of the biomethane</b> Grid injection</p> <p><b>Capacity (Nm<sup>3</sup>/h)</b> 1400</p> <p><b>Year</b> <i>In production</i></p>
<b>112.</b>	<p><b>Place</b> Pillgram, Germany</p> <p><b>Customer</b> BKW Pillgram GmbH</p> <p><b>Type of biogas</b> Agricultural</p>	<p><b>Use of the biomethane</b> Grid injection</p> <p><b>Capacity (Nm<sup>3</sup>/h)</b> 1400</p> <p><b>Year</b> <i>In production</i></p>
<b>111.</b>	<p><b>Place</b> Videbaek, Denmark</p> <p><b>Customer</b> NGF Nature Energy</p> <p><b>Type of biogas</b> Dairy waste</p>	<p><b>Use of the biomethane</b> Grid injection</p> <p><b>Capacity (Nm<sup>3</sup>/h)</b> 5000</p> <p><b>Year</b> <i>In production</i></p>

<b>110.</b>	<p><b>Place</b> Sant' Agatha, Bolgna, Italy</p> <p><b>Customer</b> HerAmbiente</p> <p><b>Type of biogas</b> Organic waste</p>	<p><b>Use of the biomethane</b> Grid injection</p> <p><b>Capacity (Nm<sup>3</sup>/h)</b> 2400</p> <p><b>Year</b> 2019</p>
<b>109.</b>	<p><b>Place</b> Bran Sands WWTP, UK</p> <p><b>Customer</b> Northumbrian Water</p> <p><b>Type of biogas</b> Sewage / waste</p>	<p><b>Use of the biomethane</b> Grid injection</p> <p><b>Capacity (Nm<sup>3</sup>/h)</b> 2500</p> <p><b>Year</b> 2019</p>
<b>108.</b>	<p><b>Place</b> Trowbridge WWTP, UK</p> <p><b>Customer</b> GENeco/Wessex Water</p> <p><b>Type of biogas</b> Sewage / waste</p>	<p><b>Use of the biomethane</b> Grid injection</p> <p><b>Capacity (Nm<sup>3</sup>/h)</b> 600</p> <p><b>Year</b> 2019</p>
<b>107.</b>	<p><b>Place</b> Mors, Denmark</p> <p><b>Customer</b> Llmfjordens Bioenergi Aps, Bigadan</p> <p><b>Type of biogas</b> Agriculture</p>	<p><b>Use of the biomethane</b> Grid injection</p> <p><b>Capacity (Nm<sup>3</sup>/h)</b> 2000</p> <p><b>Year</b> 2019</p>
<b>106.</b>	<p><b>Place</b> Lintrup, Denmark</p> <p><b>Customer</b> Ørsted, Linkogas 2</p> <p><b>Type of biogas</b> Sewage / waste</p>	<p><b>Use of the biomethane</b> Grid injection</p> <p><b>Capacity (Nm<sup>3</sup>/h)</b> 2000</p> <p><b>Year</b> 2019</p>
<b>105.</b>	<p><b>Place</b> Skellefteå, Sweden</p> <p><b>Customer</b> Skellefteå municipality</p> <p><b>Type of biogas</b> Sewage / waste</p>	<p><b>Use of the biomethane</b> Grid injection/ vehicle fuel</p> <p><b>Capacity (Nm<sup>3</sup>/h)</b> 600</p> <p><b>Year</b> 2019</p>

104.	<b>Place</b> Ellinge, Sweden  <b>Customer</b> E.ON  <b>Type of biogas</b> Sewage / waste	<b>Use of the biomethane</b> Grid injection/ vehicle fuel  <b>Capacity (Nm<sup>3</sup>/h)</b> 400  <b>Year</b> 2018
103.	<b>Place</b> Kunda, Estonia  <b>Customer</b> GreenGas OU  <b>Type of biogas</b> Pulp mill waste	<b>Use of the biomethane</b> Grid injection  <b>Capacity (Nm<sup>3</sup>/h)</b> 1400  <b>Year</b> 2018
102.	<b>Place</b> Verdal, Norway  <b>Customer</b> Ecopro AS  <b>Type of biogas</b> Waste / Sewage	<b>Use of the biomethane</b> Vehicle Fuel  <b>Capacity (Nm<sup>3</sup>/h)</b> 1000  <b>Year</b> 2017
101.	<b>Place</b> Tönsberg, Norway  <b>Customer</b> Tönsberg Kommune  <b>Type of biogas</b> Waste / Sewage	<b>Use of the biomethane</b> Grid injection  <b>Capacity (Nm<sup>3</sup>/h)</b> 1400  <b>Year</b> 2017
100.	<b>Place</b> Derby, UK  <b>Customer</b> Severn Trent Water  <b>Type of biogas</b> Food waste	<b>Use of the biomethane</b> Grid injection  <b>Capacity (Nm<sup>3</sup>/h)</b> 1200  <b>Year</b> 2016
99.	<b>Place</b> Nottingham/Stoke Bardolph, UK  <b>Customer</b> Severn Trent Water  <b>Type of biogas</b> Agricultural	<b>Use of the biomethane</b> Grid injection  <b>Capacity (Nm<sup>3</sup>/h)</b> 1200  <b>Year</b> 2016



<b>98.</b>	<p><b>Place</b> Stoke On Trent/Strongford, UK</p> <p><b>Customer</b> Severn Trent Water</p> <p><b>Type of biogas</b> Food waste</p>	<p><b>Use of the biomethane</b> Grid injection</p> <p><b>Capacity (Nm<sup>3</sup>/h)</b> 1200</p> <p><b>Year</b> 2016</p>
<b>97.</b>	<p><b>Place</b> Stourbridge/Roundhill, UK</p> <p><b>Customer</b> Severn Trent Water</p> <p><b>Type of biogas</b> Food waste</p>	<p><b>Use of the biomethane</b> Grid injection</p> <p><b>Capacity (Nm<sup>3</sup>/h)</b> 1200</p> <p><b>Year</b> 2016</p>
<b>96.</b>	<p><b>Place</b> Riihimäki, Finland</p> <p><b>Customer</b> Gasum</p> <p><b>Type of biogas</b> Food waste</p>	<p><b>Use of the biomethane</b> Grid injection</p> <p><b>Capacity (Nm<sup>3</sup>/h)</b> 1100</p> <p><b>Year</b> 2016</p>
<b>95.</b>	<p><b>Place</b> Aycliffe, UK</p> <p><b>Customer</b> Emerald Biogas</p> <p><b>Type of biogas</b> Food waste</p>	<p><b>Use of the biomethane</b> Grid injection</p> <p><b>Capacity (Nm<sup>3</sup>/h)</b> 1500</p> <p><b>Year</b> 2016</p>
<b>94.</b>	<p><b>Place</b> Davyhulme, UK</p> <p><b>Customer</b> United Utilities</p> <p><b>Type of biogas</b> Sewage</p>	<p><b>Use of the biomethane</b> Grid injection</p> <p><b>Capacity (Nm<sup>3</sup>/h)</b> 950</p> <p><b>Year</b> 2015</p>
<b>93.</b>	<p><b>Place</b> Lintrup, Denmark</p> <p><b>Customer</b> Dong Energy</p> <p><b>Type of biogas</b> Agricultural, waste</p>	<p><b>Use of the biomethane</b> Grid injection</p> <p><b>Capacity (Nm<sup>3</sup>/h)</b> 1500</p> <p><b>Year</b> 2015</p>

92.	<p><b>Place</b> Genthin, Germany</p> <p><b>Customer</b> ENERTEC Biogas Genthin GmbH</p> <p><b>Type of biogas</b> Agricultural</p>	<p><b>Use of the biomethane</b> Grid injection</p> <p><b>Capacity (Nm<sup>3</sup>/h)</b> 1000</p> <p><b>Year</b> 2015</p>
91.	<p><b>Place</b> Aylesbury, UK</p> <p><b>Customer</b> Olleco</p> <p><b>Type of biogas</b> Waste</p>	<p><b>Use of the biomethane</b> Grid injection</p> <p><b>Capacity (Nm<sup>3</sup>/h)</b> 1200</p> <p><b>Year</b> 2015</p>
90.	<p><b>Place</b> Rönnovsholm, Denmark</p> <p><b>Customer</b> Rönnovsholm</p> <p><b>Type of biogas</b> Agricultural</p>	<p><b>Use of the biomethane</b> Grid injection</p> <p><b>Capacity (Nm<sup>3</sup>/h)</b> 750</p> <p><b>Year</b> 2015</p>
89.	<p><b>Place</b> Lillehammer, Norway</p> <p><b>Customer</b> Glør IKS</p> <p><b>Type of biogas</b> Waste</p>	<p><b>Use of the biomethane</b> Vehicle Fuel</p> <p><b>Capacity (Nm<sup>3</sup>/h)</b> 600</p> <p><b>Year</b> 2015</p>
88.	<p><b>Place</b> Bergheim-Paffendorf, Germany</p> <p><b>Customer</b> KPA GmbH</p> <p><b>Type of biogas</b> Agricultural</p>	<p><b>Use of the biomethane</b> Grid injection</p> <p><b>Capacity (Nm<sup>3</sup>/h)</b> 1400</p> <p><b>Year</b> 2015</p>
87.	<p><b>Place</b> Beerfelde, Germany</p> <p><b>Customer</b> Agraferm Technologies AG</p> <p><b>Type of biogas</b> Agricultural</p>	<p><b>Use of the biomethane</b> Grid injection</p> <p><b>Capacity (Nm<sup>3</sup>/h)</b> 1400</p> <p><b>Year</b> 2015</p>

<b>86.</b>	<p><b>Place</b> Vaarst, Denmark</p> <p><b>Customer</b> Nature Energy Nordfyn A/S</p> <p><b>Type of biogas</b> Agricultural + waste</p>	<p><b>Use of the biomethane</b> Grid injection</p> <p><b>Capacity (Nm<sup>3</sup>/h)</b> 2000</p> <p><b>Year</b> 2014</p>
<b>85.</b>	<p><b>Place</b> Nordfyn, Denmark</p> <p><b>Customer</b> Nature Energy Nordfyn A/S</p> <p><b>Type of biogas</b> Agricultural + waste</p>	<p><b>Use of the biomethane</b> Grid injection</p> <p><b>Capacity (Nm<sup>3</sup>/h)</b> 2500</p> <p><b>Year</b> 2014</p>
<b>84.</b>	<p><b>Place</b> Midtfyn, Denmark</p> <p><b>Customer</b> Nature Energy Midtfyn A/S</p> <p><b>Type of biogas</b> Agricultural + waste</p>	<p><b>Use of the biomethane</b> Grid injection</p> <p><b>Capacity (Nm<sup>3</sup>/h)</b> 3000</p> <p><b>Year</b> 2014</p>
<b>83.</b>	<p><b>Place</b> Bishops Cleeve, UK</p> <p><b>Customer</b> AnDigestion Ltd</p> <p><b>Type of biogas</b> Waste</p>	<p><b>Use of the biomethane</b> Grid injection</p> <p><b>Capacity (Nm<sup>3</sup>/h)</b> 600</p> <p><b>Year</b> 2014</p>
<b>82.</b>	<p><b>Place</b> Holsted, Denmark</p> <p><b>Customer</b> Bionaturgas Holsted</p> <p><b>Type of biogas</b> Waste</p>	<p><b>Use of the biomethane</b> Grid injection</p> <p><b>Capacity (Nm<sup>3</sup>/h)</b> 3000</p> <p><b>Year</b> 2014</p>
<b>81.</b>	<p><b>Place</b> Tönsberg, Norway</p> <p><b>Customer</b> Tönsberg Kommune</p> <p><b>Type of biogas</b> Waste</p>	<p><b>Use of the biomethane</b> Grid injection</p> <p><b>Capacity (Nm<sup>3</sup>/h)</b> 1200</p> <p><b>Year</b> 2014</p>



80.	<p><b>Place</b> Brønderslev, Denmark</p> <p><b>Customer</b> GFE Krogenskær</p> <p><b>Type of biogas</b> Agricultural + waste</p>	<p><b>Use of the biomethane</b> Grid injection</p> <p><b>Capacity (Nm<sup>3</sup>/h)</b> 1400</p> <p><b>Year</b> 2014</p>
79.	<p><b>Place</b> Mörum, Sweden</p> <p><b>Customer</b> Västblekinge Miljö AB</p> <p><b>Type of biogas</b> Waste</p>	<p><b>Use of the biomethane</b> Vehicle fuel</p> <p><b>Capacity (Nm<sup>3</sup>/h)</b> 400</p> <p><b>Year</b> 2014</p>
78.	<p><b>Place</b> Bergen, Norway</p> <p><b>Customer</b> Bergen kommune</p> <p><b>Type of biogas</b> Sewage</p>	<p><b>Use of the biomethane</b> Vehicle fuel</p> <p><b>Capacity (Nm<sup>3</sup>/h)</b> 700</p> <p><b>Year</b> 2014</p>
77.	<p><b>Place</b> Gordemitz, Germany</p> <p><b>Customer</b> AC Biogasanlage Gordemitz GmbH</p> <p><b>Type of biogas</b> Agricultural + waste</p>	<p><b>Use of the biomethane</b> Grid injection</p> <p><b>Capacity (Nm<sup>3</sup>/h)</b> 1400</p> <p><b>Year</b> 2014</p>
76.	<p><b>Place</b> Alvesta, Sweden</p> <p><b>Customer</b> Alvesta Biogas AB</p> <p><b>Type of biogas</b> Agricultural + waste</p>	<p><b>Use of the biomethane</b> Vehicle fuel</p> <p><b>Capacity (Nm<sup>3</sup>/h)</b> 400</p> <p><b>Year</b> 2014</p>
75.	<p><b>Place</b> Avonmouth, UK</p> <p><b>Customer</b> Wessex Water Enterprises Ltd.</p> <p><b>Type of biogas</b> Sewage</p>	<p><b>Use of the biomethane</b> Grid injection</p> <p><b>Capacity (Nm<sup>3</sup>/h)</b> 2500</p> <p><b>Year</b> 2014</p>

74.	<p><b>Place</b> Howdon, UK</p> <p><b>Customer</b> Northumbria Water Ltd.</p> <p><b>Type of biogas</b> Sewage</p>	<p><b>Use of the biomethane</b> Grid injection</p> <p><b>Capacity (Nm<sup>3</sup>/h)</b> 1900</p> <p><b>Year</b> 2013</p>
73.	<p><b>Place</b> Rønnovsholm, Denmark</p> <p><b>Customer</b> Rønnovsholm</p> <p><b>Type of biogas</b> Agricultural</p>	<p><b>Use of the biomethane</b> Grid injection</p> <p><b>Capacity (Nm<sup>3</sup>/h)</b> 400</p> <p><b>Year</b> 2013</p>
72.	<p><b>Place</b> Horsens, Denmark</p> <p><b>Customer</b> DONG Energy</p> <p><b>Type of biogas</b> Agricultural</p>	<p><b>Use of the biomethane</b> Grid injection</p> <p><b>Capacity (Nm<sup>3</sup>/h)</b> 1400</p> <p><b>Year</b> 2013</p>
71.	<p><b>Place</b> Dessau, Germany</p> <p><b>Customer</b> BayWa r.e. Bioenergy GmbH</p> <p><b>Type of biogas</b> Agricultural</p>	<p><b>Use of the biomethane</b> Grid injection</p> <p><b>Capacity (Nm<sup>3</sup>/h)</b> 1400</p> <p><b>Year</b> 2013</p>
70.	<p><b>Place</b> Fuhsetal, Germany</p> <p><b>Customer</b> GETEC green energy AG</p> <p><b>Type of biogas</b> Agricultural</p>	<p><b>Use of the biomethane</b> Grid injection</p> <p><b>Capacity (Nm<sup>3</sup>/h)</b> 1400</p> <p><b>Year</b> 2013</p>
69.	<p><b>Place</b> Minworth, UK</p> <p><b>Customer</b> Imtech Process Limited</p> <p><b>Type of biogas</b> Sewage</p>	<p><b>Use of the biomethane</b> Grid injection</p> <p><b>Capacity (Nm<sup>3</sup>/h)</b> 1400</p> <p><b>Year</b> 2013</p>

<b>68.</b>	<p><b>Place</b> Vadsbo, Sweden</p> <p><b>Customer</b> Vadsbo Biogas AB</p> <p><b>Type of biogas</b> Waste</p>	<p><b>Use of the biomethane</b> Vehicle fuel</p> <p><b>Capacity (Nm<sup>3</sup>/h)</b> 400</p> <p><b>Year</b> 2013</p>
<b>67.</b>	<p><b>Place</b> Helsingborg, Sweden</p> <p><b>Customer</b> LBGAB</p> <p><b>Type of biogas</b> Waste</p>	<p><b>Use of the biomethane</b> Grid injection</p> <p><b>Capacity (Nm<sup>3</sup>/h)</b> 1400</p> <p><b>Year</b> 2013</p>
<b>66.</b>	<p><b>Place</b> Badeleben, Germany</p> <p><b>Customer</b> Consentis Anlagenbau GmbH</p> <p><b>Type of biogas</b> Agricultural</p>	<p><b>Use of the biomethane</b> Grid injection</p> <p><b>Capacity (Nm<sup>3</sup>/h)</b> 1100</p> <p><b>Year</b> 2013</p>
<b>65.</b>	<p><b>Place</b> Kujala, Finland</p> <p><b>Customer</b> Gasum</p> <p><b>Type of biogas</b> Waste</p>	<p><b>Use of the biomethane</b> Grid injection</p> <p><b>Capacity (Nm<sup>3</sup>/h)</b> 1100</p> <p><b>Year</b> 2013</p>
<b>64.</b>	<p><b>Place</b> Jeppo, Finland</p> <p><b>Customer</b> Jeppo Biogas AB</p> <p><b>Type of biogas</b> Agricultural/waste</p>	<p><b>Use of the biomethane</b> Vehicle fuel</p> <p><b>Capacity (Nm<sup>3</sup>/h)</b> 400</p> <p><b>Year</b> 2013</p>
<b>63.</b>	<p><b>Place</b> Hjørring, Denmark</p> <p><b>Customer</b> Lbt Agro K/S</p> <p><b>Type of biogas</b> Agricultural/waste</p>	<p><b>Use of the biomethane</b> Grid injection</p> <p><b>Capacity (Nm<sup>3</sup>/h)</b> 1400</p> <p><b>Year</b> 2013</p>

62.	<b>Place</b> Jordberga, Sweden  <b>Customer</b> SBI Jordberga AB  <b>Type of biogas</b> Agricultural	<b>Use of the biomethane</b> Grid injection  <b>Capacity (Nm<sup>3</sup>/h)</b> 2400  <b>Year</b> 2013
61.	<b>Place</b> Uppsala, Sweden  <b>Customer</b> Uppsala Vatten och Avfall AB  <b>Type of biogas</b> Waste	<b>Use of the biomethane</b> Vehicle fuel  <b>Capacity (Nm<sup>3</sup>/h)</b> 1200  <b>Year</b> 2013
60.	<b>Place</b> Dorsten, Germany  <b>Customer</b> EnD-I group  <b>Type of biogas</b> Agricultural/waste	<b>Use of the biomethane</b> Grid injection  <b>Capacity (Nm<sup>3</sup>/h)</b> 2800  <b>Year</b> 2013
59.	<b>Place</b> Laocheng, China  <b>Customer</b> Hainan Chengmai Shenzhou Vehicle Biogas  <b>Type of biogas</b> Agricultural/waste	<b>Use of the biomethane</b> Vehicle fuel  <b>Capacity (Nm<sup>3</sup>/h)</b> 1250  <b>Year</b> 2012
58.	<b>Place</b> Oebisfelde, Germany  <b>Customer</b> PNE Engineering GmbH  <b>Type of biogas</b> Agricultural	<b>Use of the biomethane</b> Grid injection  <b>Capacity (Nm<sup>3</sup>/h)</b> 1400  <b>Year</b> 2012
57.	<b>Place</b> Hadmersleben, Germany  <b>Customer</b> Bioraffinerie Hadmersleben GmbH  <b>Type of biogas</b> Agricultural	<b>Use of the biomethane</b> Grid injection  <b>Capacity (Nm<sup>3</sup>/h)</b> 1400  <b>Year</b> 2012

<b>56.</b>	<b>Place</b> Neuburg Steinhausen, Germany	<b>Use of the biomethane</b> Grid injection
	<b>Customer</b> AC Biogasanlage Elf Management GmbH	<b>Capacity (Nm<sup>3</sup>/h)</b> 1400
	<b>Type of biogas</b> Agricultural	<b>Year</b> 2013
<b>55.</b>	<b>Place</b> Suomenoja, Finland	<b>Use of the biomethane</b> Grid injection
	<b>Customer</b> Gasum Oy	<b>Capacity (Nm<sup>3</sup>/h)</b> 600
	<b>Type of biogas</b> Sewage	<b>Year</b> 2012
<b>54.</b>	<b>Place</b> Hage, Germany	<b>Use of the biomethane</b> Grid injection
	<b>Customer</b> agri.capital Biomethan Zwei GmbH & Co. KG	<b>Capacity (Nm<sup>3</sup>/h)</b> 700
	<b>Type of biogas</b> Agricultural	<b>Year</b> 2012
<b>53.</b>	<b>Place</b> Vettweiß, Germany	<b>Use of the biomethane</b> Grid injection
	<b>Customer</b> Agrarenergie Vettweiß GmbH	<b>Capacity (Nm<sup>3</sup>/h)</b> 1100
	<b>Type of biogas</b> Agricultural	<b>Year</b> 2012
<b>52.</b>	<b>Place</b> Brumby, Germany	<b>Use of the biomethane</b> Grid injection
	<b>Customer</b> DEL Biogas GmbH & Co. KG	<b>Capacity (Nm<sup>3</sup>/h)</b> 1400
	<b>Type of biogas</b> Agricultural	<b>Year</b> 2012
<b>51.</b>	<b>Place</b> Boppard, Germany	<b>Use of the biomethane</b> Grid injection
	<b>Customer</b> BEE Bioenergieerzeugung Koblenz GmbH	<b>Capacity (Nm<sup>3</sup>/h)</b> 1400
	<b>Type of biogas</b> Agricultural	<b>Year</b> 2012

<b>50.</b>	<b>Place</b> Röblingen, Germany	<b>Use of the biomethane</b> Grid injection
	<b>Customer</b> AC Biogasanlage Röblingen GmbH	<b>Capacity (Nm<sup>3</sup>/h)</b> 1400
	<b>Type of biogas</b> Agricultural	<b>Year</b> 2011
<b>49.</b>	<b>Place</b> Brålanda, Sweden	<b>Use of the biomethane</b> Vehicle fuel
	<b>Customer</b> Trollhättan Energi	<b>Capacity (Nm<sup>3</sup>/h)</b> 300
	<b>Type of biogas</b> Agricultural /waste	<b>Year</b> 2011
<b>48.</b>	<b>Place</b> Hallertau, Germany	<b>Use of the biomethane</b> Grid injection
	<b>Customer</b> Bioerdgas Hallertau GmbH, E.ON	<b>Capacity (Nm<sup>3</sup>/h)</b> 2200
	<b>Type of biogas</b> Agricultural	<b>Year</b> 2011
<b>47.</b>	<b>Place</b> Wixhausen, Germany	<b>Use of the biomethane</b> Grid injection
	<b>Customer</b> HSE AG	<b>Capacity (Nm<sup>3</sup>/h)</b> 600
	<b>Type of biogas</b> Agricultural	<b>Year</b> 2011
<b>46.</b>	<b>Place</b> Uchte, Germany	<b>Use of the biomethane</b> Grid injection
	<b>Customer</b> PNE AG	<b>Capacity (Nm<sup>3</sup>/h)</b> 1250
	<b>Type of biogas</b> Agricultural	<b>Year</b> 2011
<b>45.</b>	<b>Place</b> Osterby, Germany	<b>Use of the biomethane</b> Grid injection
	<b>Customer</b> Biomethan Osterby GmbH & Co. KG	<b>Capacity (Nm<sup>3</sup>/h)</b> 700
	<b>Type of biogas</b> Agricultural	<b>Year</b> 2011



<b>44.</b>	<p><b>Place</b> Ottersberg, Germany</p> <p><b>Customer</b> swb Services GmbH &amp; Co. KG</p> <p><b>Type of biogas</b> Agricultural</p>	<p><b>Use of the biomethane</b> Grid injection</p> <p><b>Capacity (Nm<sup>3</sup>/h)</b> 1250</p> <p><b>Year</b> 2011</p>
<b>43.</b>	<p><b>Place</b> Schwarze, Germany</p> <p><b>Customer</b> swb Services GmbH &amp; Co. KG</p> <p><b>Type of biogas</b> Agricultural</p>	<p><b>Use of the biomethane</b> Grid injection</p> <p><b>Capacity (Nm<sup>3</sup>/h)</b> 800</p> <p><b>Year</b> 2011</p>
<b>42.</b>	<p><b>Place</b> Fürth, Germany</p> <p><b>Plant</b> infra fürth gmbh</p> <p><b>Type of biogas</b> Agricultural</p>	<p><b>Use of the biomethane</b> Grid injection</p> <p><b>Capacity (Nm<sup>3</sup>/h)</b> 1400</p> <p><b>Year</b> 2011</p>
<b>41.</b>	<p><b>Place</b> Satuelle, Germany</p> <p><b>Plant</b> PNE Biogas Ohretal</p> <p><b>Type of biogas</b> Agricultural</p>	<p><b>Use of the biomethane</b> Grid injection</p> <p><b>Capacity (Nm<sup>3</sup>/h)</b> 1400</p> <p><b>Year</b> 2011</p>
<b>40.</b>	<p><b>Place</b> Haßlau, Sachsen, Germany</p> <p><b>Plant</b> Haßlau</p> <p><b>Type of biogas</b> Agricultural</p>	<p><b>Use of the biomethane</b> Grid injection</p> <p><b>Capacity (Nm<sup>3</sup>/h)</b> 1400</p> <p><b>Year</b> 2011</p>
<b>39.</b>	<p><b>Place</b> Zittau, Sachsen, Germany</p> <p><b>Plant</b> BioMethan Zittau</p> <p><b>Type of biogas</b> Agricultural</p>	<p><b>Use of the biomethane</b> Grid injection</p> <p><b>Capacity (Nm<sup>3</sup>/h)</b> 1250</p> <p><b>Year</b> 2012</p>

38.	<p><b>Place</b> Holleben, Sachsen-Anhalt, Germany</p> <p><b>Plant</b> Holleben II</p> <p><b>Type of biogas</b> Agricultural</p>	<p><b>Use of the biomethane</b> Grid injection</p> <p><b>Capacity (Nm<sup>3</sup>/h)</b> 1400</p> <p><b>Year</b> 2010</p>
37.	<p><b>Place</b> Schuby, Schleswig-Holstein, Germany</p> <p><b>Plant</b> Beta Biomethan Schuby</p> <p><b>Type of biogas</b> Agricultural</p>	<p><b>Use of the biomethane</b> Grid injection</p> <p><b>Capacity (Nm<sup>3</sup>/h)</b> 1800</p> <p><b>Year</b> 2011</p>
36.	<p><b>Place</b> Norrköping, Sweden</p> <p><b>Plant</b> Svensk Biogas</p> <p><b>Type of biogas</b> Waste</p>	<p><b>Use of the biomethane</b> Vehicle fuel</p> <p><b>Capacity (Nm<sup>3</sup>/h)</b> 400</p> <p><b>Year</b> 2010</p>
35.	<p><b>Place</b> Nauen, OT Neukammer, Brandenburg, Germany</p> <p><b>Plant</b> Agro Biogasanlage Nauen</p> <p><b>Type of biogas</b> Agricultural</p>	<p><b>Use of the biomethane</b> Grid injection</p> <p><b>Capacity (Nm<sup>3</sup>/h)</b> 1250</p> <p><b>Year</b> 2010</p>
34.	<p><b>Place</b> Dargun, Mecklenburg-Vorpommern, Germany</p> <p><b>Plant</b> Biogaskraftwerk Dargun</p> <p><b>Type of biogas</b> Agricultural</p>	<p><b>Use of the biomethane</b> Grid injection</p> <p><b>Capacity (Nm<sup>3</sup>/h)</b> 1250</p> <p><b>Year</b> 2010</p>
33.	<p><b>Place</b> Dargun, Mecklenburg-Vorpommern, Germany</p> <p><b>Plant</b> Biogaskraftwerk Dargun</p> <p><b>Type of biogas</b> Agricultural</p>	<p><b>Use of the biomethane</b> Grid injection</p> <p><b>Capacity (Nm<sup>3</sup>/h)</b> 1250</p> <p><b>Year</b> 2010</p>

32.	<b>Place</b> Itzig, Luxemburg	<b>Use of the biomethane</b> Grid injection
	<b>Plant</b> Bakona s.a.r.l.	<b>Capacity (Nm<sup>3</sup>/h)</b> 600
	<b>Type of biogas</b> Agricultural/Waste	<b>Year</b> 2010
31.	<b>Place</b> Halle, Nordrhein-Westfalen, Germany	<b>Use of the biomethane</b> Grid injection
	<b>Plant</b> swb	<b>Capacity (Nm<sup>3</sup>/h)</b> 800
	<b>Type of biogas</b> Agricultural	<b>Year</b> 2010
30.	<b>Place</b> Semd, Hessen, Germany	<b>Use of the biomethane</b> Grid injection
	<b>Plant</b> Biogas Semd, HSE	<b>Capacity (Nm<sup>3</sup>/h)</b> 400
	<b>Type of biogas</b> Agricultural	<b>Year</b> 2010
29.	<b>Place</b> Wetschen, Niedersachsen, Germany	<b>Use of the biomethane</b> Grid injection
	<b>Plant</b> Biogas Wetscherbruch	<b>Capacity (Nm<sup>3</sup>/h)</b> 1250
	<b>Type of biogas</b> Agricultural	<b>Year</b> 2009
28.	<b>Place</b> Jönköping, Sweden	<b>Use of the biomethane</b> Vehicle fuel
	<b>Plant</b> Simsholmens WWTP	<b>Capacity (Nm<sup>3</sup>/h)</b> 640
	<b>Type of biogas</b> Sewage	<b>Year</b> 2010
27.	<b>Place</b> Willinghausen-Ransbach, Hessen, Germany	<b>Use of the biomethane</b> Grid injection
	<b>Plant</b> Schwälmer Biogas	<b>Capacity (Nm<sup>3</sup>/h)</b> 800
	<b>Type of biogas</b> Agricultural	<b>Year</b> 2009

26.	<b>Place</b> Lund, Sweden  <b>Plant</b> Källby WWTP  <b>Type of biogas</b> Sewage	<b>Use of the biomethane</b> Vehicle fuel  <b>Capacity (Nm<sup>3</sup>/h)</b> 200  <b>Year</b> 2009
25.	<b>Place</b> Stockholm, Sweden  <b>Plant</b> Käppalaförbundet  <b>Type of biogas</b> Sewage	<b>Use of the biomethane</b> Vehicle fuel  <b>Capacity (Nm<sup>3</sup>/h)</b> 1000  <b>Year</b> 2010
24.	<b>Place</b> Magdeburg, Sachsen-Anhalt, Germany  <b>Plant</b> Niederndodeleben  <b>Type of biogas</b> Agricultural gas	<b>Use of the biomethane</b> Grid injection  <b>Capacity (Nm<sup>3</sup>/h)</b> 1250  <b>Year</b> 2009
23.	<b>Place</b> Asten, Linz, Austria  <b>Plant</b> LINZ GAS/WÄRME  <b>Type of biogas</b> Sewage	<b>Use of the biomethane</b> Grid injection  <b>Capacity (Nm<sup>3</sup>/h)</b> 800  <b>Year</b> 2009
22.	<b>Place</b> Lüchow, Niedersachsen, Germany  <b>Plant</b> agri capital, Lüchow  <b>Type of biogas</b> Agricultural	<b>Use of the biomethane</b> Grid injection  <b>Capacity (Nm<sup>3</sup>/h)</b> 1250  <b>Year</b> 2008
21.	<b>Place</b> Homberg-Efze, Hessen, Germany  <b>Plant</b> Biogas Homberg GmbH & Co. KG  <b>Type of biogas</b> Agricultural	<b>Use of the biomethane</b> Grid injection  <b>Capacity (Nm<sup>3</sup>/h)</b> 800  <b>Year</b> 2008

20.	<b>Place</b> Schmargendorf, Brandenburg, Germany	<b>Use of the biomethane</b> Grid injection
	<b>Plant</b> agri capital, Schmargendorf	<b>Capacity (Nm<sup>3</sup>/h)</b> 1250
	<b>Type of biogas</b> Agricultural	<b>Year</b> 2008
19.	<b>Place</b> Maihingen, Bayern, Germany	<b>Use of the biomethane</b> Grid injection
	<b>Plant</b> erdgas schwaben	<b>Capacity (Nm<sup>3</sup>/h)</b> 1250
	<b>Type of biogas</b> Agricultural	<b>Year</b> 2008
18.	<b>Place</b> Darmstadt, Hessen, Germany	<b>Use of the biomethane</b> Grid injection
	<b>Plant</b> ÖKOBIT/Stadtwerk Darmstadt	<b>Capacity (Nm<sup>3</sup>/h)</b> 300
	<b>Type of biogas</b> Agricultural	<b>Year</b> 2008
17.	<b>Place</b> Könnern, Sachsen-Anhalt, Germany	<b>Use of the biomethane</b> Grid injection
	<b>Plant</b> agri capital, Könnern	<b>Capacity (Nm<sup>3</sup>/h)</b> 1250
	<b>Type of biogas</b> Agricultural	<b>Year</b> 2007
16.	<b>Place</b> Helsingborg, Sweden	<b>Use of the biomethane</b> Grid injection
	<b>Plant</b> Helsingborg municipality	<b>Capacity (Nm<sup>3</sup>/h)</b> 250
	<b>Type of biogas</b> Sewage	<b>Year</b> 2007
15.	<b>Place</b> Falköping, Sweden	<b>Use of the biomethane</b> Vehicle fuel
	<b>Plant</b> Göteborg's Energy	<b>Capacity (Nm<sup>3</sup>/h)</b> 200
	<b>Type of biogas</b> Sewage/waste	<b>Year</b> 2007

14.	<b>Place</b> Laholm, Sweden  <b>Plant</b> E.ON Sweden AB  <b>Type of biogas</b> Sewage/waste	<b>Use of the biomethane</b> Grid injection  <b>Capacity (Nm<sup>3</sup>/h)</b> 500  <b>Year</b> 2007
13.	<b>Place</b> Helsingborg, Sweden  <b>Plant</b> NSR AB  <b>Type of biogas</b> Waste	<b>Use of the biomethane</b> Grid injection  <b>Capacity (Nm<sup>3</sup>/h)</b> 650  <b>Year</b> 2007
12.	<b>Place</b> Örebro, Sweden  <b>Plant</b> Örebro municipality  <b>Type of biogas</b> Sewage	<b>Use of the biomethane</b> Vehicle fuel  <b>Capacity (Nm<sup>3</sup>/h)</b> 450  <b>Year</b> 2006
11.	<b>Place</b> Östersund, Sweden  <b>Plant</b> Östersund municipality  <b>Type of biogas</b> Sewage	<b>Use of the biomethane</b> Vehicle fuel  <b>Capacity (Nm<sup>3</sup>/h)</b> 200  <b>Year</b> 2006
10.	<b>Place</b> Kristianstad, Sweden  <b>Plant</b> Kristianstad municipality  <b>Type of biogas</b> Sewage/waste	<b>Use of the biomethane</b> Vehicle fuel  <b>Capacity (Nm<sup>3</sup>/h)</b> 600  <b>Year</b> 2006
9.	<b>Place</b> Stockholm, Sweden  <b>Plant</b> Stockholm Vatten AB  <b>Type of biogas</b> Sewage	<b>Use of the biomethane</b> Grid injection/vehicle fuel  <b>Capacity (Nm<sup>3</sup>/h)</b> 800  <b>Year</b> 2006



8.	<b>Place</b> Skellefteå, Sweden  <b>Plant</b> Skellefteå municipality  <b>Type of biogas</b> Sewage	<b>Use of the biomethane</b> Vehicle fuel  <b>Capacity (Nm<sup>3</sup>/h)</b> 250  <b>Year</b> 2005
7.	<b>Place</b> Norrköping, Sweden  <b>Plant</b> E.ON Sverige AB  <b>Type of biogas</b> Sewage	<b>Use of the biomethane</b> Vehicle fuel  <b>Capacity (Nm<sup>3</sup>/h)</b> 250  <b>Year</b> 2004
6.	<b>Place</b> Stockholm, Sweden  <b>Plant</b> Stockholm Vatten AB  <b>Type of biogas</b> Sewage	<b>Use of the biomethane</b> Vehicle fuel  <b>Capacity (Nm<sup>3</sup>/h)</b> 600  <b>Year</b> 2004
5.	<b>Place</b> Laholm, Sweden  <b>Plant</b> E.ON Sverige AB  <b>Type of biogas</b> Agricultural/waste	<b>Use of the biomethane</b> Grid injection  <b>Capacity (Nm<sup>3</sup>/h)</b> 500  <b>Year</b> 2003
4.	<b>Place</b> Uppsala, Sweden  <b>Plant</b> Uppsala municipality  <b>Type of biogas</b> Sewage/waste	<b>Use of the biomethane</b> Vehicle fuel  <b>Capacity (Nm<sup>3</sup>/h)</b> 400  <b>Year</b> 2001
3.	<b>Place</b> Laholm, Sweden  <b>Plant</b> E.ON Sverige AB  <b>Type of biogas</b> Agricultural/waste	<b>Use of the biomethane</b> Grid injection  <b>Capacity (Nm<sup>3</sup>/h)</b> 200  <b>Year</b> 2000

2.	<b>Place</b> Jönköping, Sweden	<b>Use of the biomethane</b> Vehicle fuel
	<b>Plant</b> Jönköping municipality	<b>Capacity (Nm<sup>3</sup>/h)</b> 300
	<b>Type of biogas</b> Sewage	<b>Year</b> 1999
1.	<b>Place</b> Kristianstad, Sweden	<b>Use of the biomethane</b> Vehicle fuel
	<b>Plant</b> Kristianstad municipality	<b>Capacity (Nm<sup>3</sup>/h)</b> 175
	<b>Type of biogas</b> Sewage	<b>Year</b> 1998